



# BALL VALVE

**DZR TWO PIECE, PN25**

**Model Number: MV10-11230**



## FEATURES / CHARACTERISTICS

|                |                          |
|----------------|--------------------------|
| Rating         | PN25                     |
| Connections    | BS EN 10226-2            |
|                | Taper Threaded (ex BS21) |
| Working Medium | Water, Oil and Steam     |

Two Piece Body, Full Bore, PTFE Seats and Stem Seals

## ON REQUEST

NPT Threads, (subject to minimum order quantities)

## HYDROSTATIC TEST PRESSURE

Shell- 37.5 bar

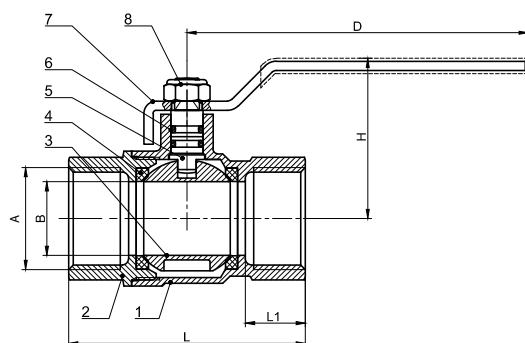
Seat- 27.5 bar

## WORKING TEMPERATURE

25 Bar -10° C to 110° C water

## MATERIAL SPECIFICATIONS

|   | PARTS     | MATERIAL            |
|---|-----------|---------------------|
| 1 | Body      | DZR CZ132A(C35200)  |
| 2 | Bonnet    | DZR CZ132A(C35200)  |
| 3 | Ball      | DZR CZ132A(C35200)  |
| 4 | Seal Ring | PTFE                |
| 5 | Spindle   | DZR CZ132A(C35200)  |
| 6 | O-Ring    | EPDM(HA70)          |
| 7 | Handle    | Steel (Zinc Plated) |
| 8 | Nut       | Stainless Steel 304 |



## DIMENSIONS (mm)

| Sizes |      | A      | B   | L1   | L   | H    | D   |
|-------|------|--------|-----|------|-----|------|-----|
| DN    | inch |        |     |      |     |      |     |
| 15    | ½"   | R1/2   | Ø14 | 15.5 | 56  | 42.3 | 96  |
| 20    | ¾"   | R3/4   | Ø19 | 17   | 65  | 48.8 | 111 |
| 25    | 1"   | R1     | Ø24 | 19.5 | 77  | 52.3 | 111 |
| 32    | 1¼"  | R1 1/4 | Ø31 | 22   | 92  | 77.8 | 141 |
| 40    | 1½"  | R1 1/2 | Ø38 | 22   | 103 | 83.3 | 141 |
| 50    | 2"   | R2     | Ø49 | 26   | 120 | 91.3 | 166 |

\*All dimensions are nominal (indicative)  
Actual dimensions may vary