



# BALL VALVE

**BRONZE TWO PIECE, FULL BORE, PN40**

**Model Number: MV10-11240**



## FEATURES / CHARACTERISTICS

Design	MSS-SP-110
Rating	PN40
Connections	BSPP-ISO228
Working Medium	Water, Oil and Steam

Two Piece Body, Full Bore, PTFE Seats and Stem Seals

## ON REQUEST

NPT Threads, (subject to minimum order quantities)

## HYDROSTATIC TEST PRESSURE

Shell- 60 bar

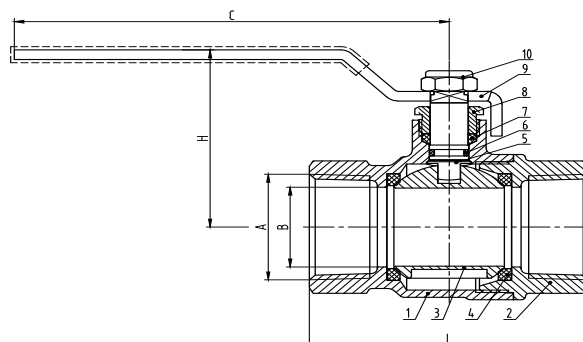
Seat- 44 bar

## WORKING TEMPERATURE

40 Bar -10°~+140°C

## MATERIAL SPECIFICATIONS

	PARTS	MATERIAL
1	Valve Body	Bronze C83600
2	Bonnet	Bronze C83600
3	Ball	CW617N-1½"~1" SS304-1¼"~2"
4	Seat	PTFE
5	Stem	CW617N
6	O-Ring	NBR (HA70)
7	Packing	PTFE
8	Packing Nut	Brass HPb59-2RA
9	Handle	Q235A
10	Hex Nut	SS304



## DIMENSIONS (mm)

Sizes		A	B	L	H	C
DN	inch					
15	½"	BSPP(G)-ISO228	Ø15	54	42.5	95
20	¾"	BSPP(G)-ISO228	Ø20	62	51	100
25	1"	BSPP(G)-ISO228	Ø25	74	55.5	115
32	1¼"	BSPP(G)-ISO228	Ø32	85	81.5	141
40	1½"	BSPP(G)-ISO228	Ø40	94	87	141
50	2"	BSPP(G)-ISO228	Ø50	109.5	97.5	165

\*All dimensions are nominal (indicative)  
Actual dimensions may vary