



BALL VALVE

BRONZE TWO PIECE, EXTENDED STEM, PN40

Model Number: MV10-11240EXT

FEATURES / CHARACTERISTICS

Rating	PN40
Connections	BS EN 10226-2
	Taper Threaded (ex BS21)
Working Medium	Water, Oil and Steam

Two Piece Body, Full Bore, Extended Stem , PTFE Seats and Stem Seals

ON REQUEST

NPT Threads, (subject to minimum order quantities)

HYDROSTATIC TEST PRESSURE

Shell- 60 bar

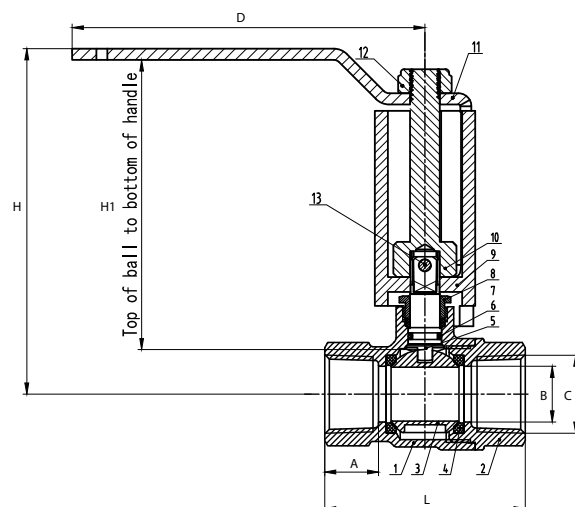
Seat- 44 bar

WORKING TEMPERATURE

40 Bar -10° C to 110° C water

MATERIAL SPECIFICATIONS

	PARTS	MATERIAL
1	Body	Bronze C83600
2	Bonnet	Bronze C83600
3	Ball	Brass CW617N
4	Seat	PTFE
5	Stem	Brass CW617N
6	O-Ring	NBR-N7049
7	Packing	PTFE
8	Packing Nut	Brass HPb57-3
9	Extension Housing	Aluminium
10	Extension Stem	Brass CW617N
11	Handle	Steel
12	Nut	Stainless Steel 304
13	Point Set Screw	Stainless Steel 304



DIMENSIONS (mm)

Sizes		A	B	C	D	H	H1	L
DN	inch							
15	½"	14.5	14.5	Rc1/2	95	93	78	54
20	¾"	15	19.5	Rc3/4	110	97	78	62
25	1"	18	24.5	Rc1	110	100.5	78	74
32	1¼"	18.5	32	Rc1 1/4	141	108	80	85
40	1½"	18.5	40	Rc1 1/2	141	114	80	94
50	2"	19.5	50	Rc2	165	130	88	109.5

*All dimensions are nominal (indicative)
Actual dimensions may vary