



# BALL VALVE

**BRASS TWO PIECE, PN25**  
**Model Number: MV10-11202**

## FEATURES / CHARACTERISTICS

Rating	PN25
Connections	BS EN 10226-2
	Taper Threaded (ex BS21)
Working Medium	Water, Oil and Steam

Two Piece Body, Full Bore, PTFE Seats and Stem Seals

## ON REQUEST

NPT Threads, (subject to minimum order quantities)

## HYDROSTATIC TEST PRESSURE

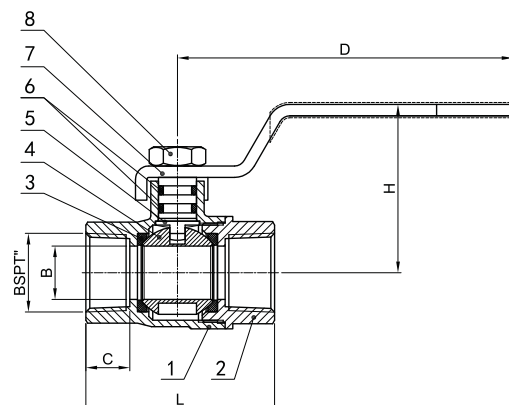
Shell- 37.5 bar  
 Seat- 27.5 bar

## WORKING TEMPERATURE

25 Bar 0° C to +95° C water

## MATERIAL SPECIFICATIONS

	PARTS	MATERIAL
1	Body	Brass (CW617N)
2	Bonnet	Brass (CW617N)
3	Seal Ring	PTFE
4	Ball	Lead Brass
5	Stem	Brass (CW617N)
6	O-Ring	EPDM
7	Handle	Steel
8	Nut	Stainless Steel 304



## DIMENSIONS (mm)

Sizes		L	C	B	H	D
DN	inch					
15	½"	49.5	11.5	14	44.2	88
20	¾"	57.5	13.5	19	47.7	88
25	1"	67.5	15.5	24	53.4	103
32	1¼"	78	16	31	60.4	116
40	1½"	85.5	16.5	38	70.3	135
50	2"	102	18	47	79.9	156

\*All dimensions are nominal (indicative)  
 Actual dimensions may vary